

Community Payback Report 2010



Foreword



I am delighted to welcome you to our first Community Payback Report – an opportunity to highlight the work that offenders are carrying out across Hampshire and the Isle of Wight in reparation for their crimes.

Hampshire Probation Trust is proud of the work done by its Community Payback team, working with offenders to provide unpaid work for their communities and challenging offenders to think again about their behaviour. We know we can't deliver Community Payback effectively alone and have worked to develop strong partnerships with a variety of organisations; these include the local authorities of Portsmouth, Southampton, Hampshire and the Isle of Wight, district and parish councils, as well as charities and local community-based groups.

It is critical that Community Payback hours are used effectively as a punishment and that the public are able to see the results of the unpaid work carried out by offenders in Hampshire and on the Isle of Wight. It is also important that the public have opportunities to contribute ideas and views as to which work projects are undertaken.

The Community Payback projects combine visible hard work with the opportunity for offenders to learn useful and practical life skills that can help toward future employment. This helps to reduce the risk of re-offending and make Hampshire and the Isle of Wight safer.

We are committed to recognising the diverse needs and backgrounds of all the people with whom we work and recognise that successful outcomes for offenders and victims are dependant upon this. We tailor our work to meeting those needs in an approach that aims to ensure equity of outcomes for everybody.

This report is a snapshot of the work that is being carried out across our area, we hope it shows how Community Payback is ensuring that offenders give something back to the community for their crimes.

A handwritten signature in black ink that reads "Barrie D. Crook". The signature is written in a cursive style.

Barrie Crook
Chief Executive, Hampshire Probation Trust

What is Community Payback and how is it delivered?

Offenders have been undertaking unpaid work across the country for more than 30 years. It began as Community Service and is now called Community Payback - a name that makes the point very clearly that this sentence is all about offenders giving their time and effort to the community in a very visible way.

Hampshire Probation Trust has a team of 40 staff that delivers Community Payback to a population of 1.8 million people across Hampshire and the Isle of Wight. We work with more than 6,000 offenders at any one time and, of those, almost 3,000 have been given a court order to carry out Community Payback hours for their crimes.

Hampshire Probation Trust aims to:

- Protect the public
- Reduce the risk of re-offending
- Enforce the orders of the court
- Enable the rehabilitation offenders

Community Payback is an element in many community sentences, and both Crown Courts and Magistrates Courts can make orders. The Courts can order an offender to complete between 40 and 300 hours within a 12 month period, and anyone not attending is likely to find themselves back in Court.

Offenders sentenced to Community Payback are assessed twice, first before sentence to assess the person and their crime. Then, after an order is made, our Community Payback team carries out a further assessment so that the offender can be found a suitable work placement depending on the level of supervision the offender needs. Some are suitable to work in an individual placement and are supervised by the agency providing the work. Others need to be supervised in a group by a Probation Supervisor.

Offenders subject to Community Payback could find themselves working on a variety of different projects but with a common outcome - all the projects benefit their local communities and organisations, some of whom could not otherwise undertake the work. Projects could include cutting back undergrowth on public footpaths and graffiti removal; painting and decorating church halls and community centres; groundwork and maintenance for schools and charitable organisations. Involvement in projects that improve local facilities can also encourage offenders to desist from participating in anti-social or destructive behaviour.



Community Payback

- facts and figures

Over the last 12 months, Hampshire Probation Trust supervised over 3,000 offenders ordered by the courts to complete specified hours of unpaid work for their crimes. These offenders completed approximately 243,000 hours of unpaid work worth an estimated £1.4 million to the community (calculated using the minimum wage).

The Community Payback team has worked with 587 different organisations from the public, private and voluntary sectors, who have requested support for a variety of projects that have been of benefit to local communities including:

- Graffiti removal
- Litter clearance
- Repairing and redecorating community centres
- Environmental work, such as maintaining churchyards
- Specialist work at local heritage centres

Hampshire Probation Trust actively encourages feedback from organisations (beneficiaries) for whom offenders have worked to ensure we are providing what communities need. These are some of our key findings:

- 96% rated the overall standard of the work carried out by offenders good or excellent
- Nine out of ten thought we supervised our offenders in a good or excellent way
- 75% of beneficiaries believed that offenders developed new skills whilst involved in Community Payback
- One in four offenders continued to volunteer to work for beneficiaries after they finished their orders
- 50% of beneficiaries judged the service they received from Hampshire Probation Trust's Community Payback team as excellent, while the other 50% judged it as good.
- All beneficiaries would consider using Community Payback again and 96% would recommend it to another organisation.



What this means to your local area

The Trust is divided into 4 localities - South East Hampshire, Southampton and the surrounding area, North Hampshire and the Isle of Wight. Working locally like this, we are able to form partnerships with organisations to meet local need.

Area	Number of Beneficiaries	Number of Offenders	Number of hours
South East Hampshire	214	827	73,265
Southampton and Surrounding area	195	975	92,574
North Hampshire	124	769	59,115
Isle of Wight	54	226	18,499
Total	587	2797	243,450

* All data is for the 12 months from October 2009 to September 2010

Each offender is assessed as to the type of supervision required when carrying out Community Payback. Where offenders are in individual placements, we offer support and/or training to the beneficiaries supervising these offenders. From Oct 2009 – September 2010, offenders on individual placements worked approximately 91,000 hours.

Other offenders are placed in groups supervised by Hampshire Probation Trust staff and these groups completed around 154,000 hours of work, making a total of 243,000 hours in that 12 month period.



South East Hampshire

The Community Payback team in South East Hampshire covers an area from Fareham in the west to Havant in the east and north to Petersfield.

We have worked closely with Portsmouth City Council and Havant, Fareham and Gosport Borough councils, helping with projects to improve the lives of their residents. Projects, such as those shown below, have given the offenders useful skills that we hope that they can use in future employment.

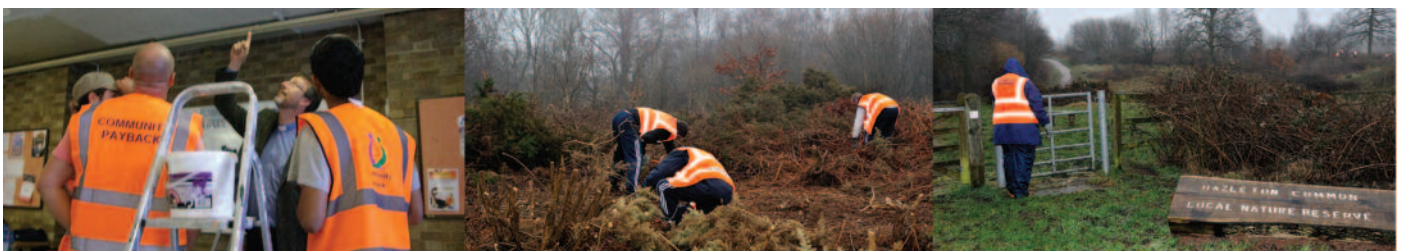
Cornelius Special Needs Centre

The Cornelius Centre in Fratton is used by people with special needs - it's a place for them to meet and socialise with other members. For the past six months, offenders have been working hard to rejuvenate what was a run-down building and have not only been taught skills to paint and redecorate, but have learnt to work as a team to complete the tasks given.

The main hall, kitchen area, toilet facilities, staircase and adjoining rooms have all been repainted, making the place brighter, fresher and providing a more pleasant environment for the users. Many offenders meet users of the centre and see what the work they've done means to them, giving the offenders a real sense of achievement in the work they have completed.

Elson Junior School

For many children living in an urban area a garden can be a yard at the back of their home with little or no space to grow any plants or vegetables. Elson Junior School in Gosport asked our Community Payback team if they could help turn an overgrown area into an allotment. Having cut back part of the school's nature area, the group were then tasked with strimming the grass before digging out plots for the children to plant vegetables in. The area is now being used successfully as an allotment by the school.



Southampton and surrounding area

Over the last 12 months, Southampton and the surrounding area has been at the forefront of the 'Justice Seen, Justice Done' initiative. As part of the campaign, the public were encouraged to vote on projects they thought offenders should undertake which, with the support of Southampton City Council, led to a number of Community Payback opportunities. Here are some of the projects offenders have been involved with:

QE2 Mile

Chewing gum on the pavement is a major problem across many cities and Southampton is no exception. To tackle the problem, Southampton City Council invested in new high-pressure equipment to clean the pavements.

Offenders have helped council workers remove the gum from Southampton's busiest shopping areas. This involved operating the new equipment and scraping up the hardest-to-remove gum. The 'big clean' in this popular area of Southampton, has helped to improve the quality and appearance of the pavements. The success of the project has led to offenders being involved in similar 'big cleans' around the city.

Lymington Sea Water Baths

The Lymington Sea Water Baths date back to the late 18th century and are the largest along the south coast. They were built when bathing in seawater was very popular and people came there from across the country to improve their health. The local council acquired the Baths in 1929.

The Baths had been closed for 18 months and were in desperate need of maintenance, repainting and redecoration. In partnership with Lymington and Pennington Town Council, Community Payback offenders worked hard to re-open them for business in the spring. Offenders, with the guidance of their Supervisor, attained a variety of skills whilst working on the project. The Sea Water Baths re-opened in April 2010 and, as a result of their work, the Community Payback team has been asked to return in 2011 to help with ongoing maintenance and redecoration that might be required.



Isle of Wight

This year, more than 200 offenders subject to Community Payback on the Isle of Wight have worked on over 50 projects which will help improve the quality of Islanders' lives.

The projects ranged from clearing up the local environment to painting and decorating community resources or helping design and plant a new garden for people with disabilities. Some of these projects are detailed below:

Ryde Skate Park

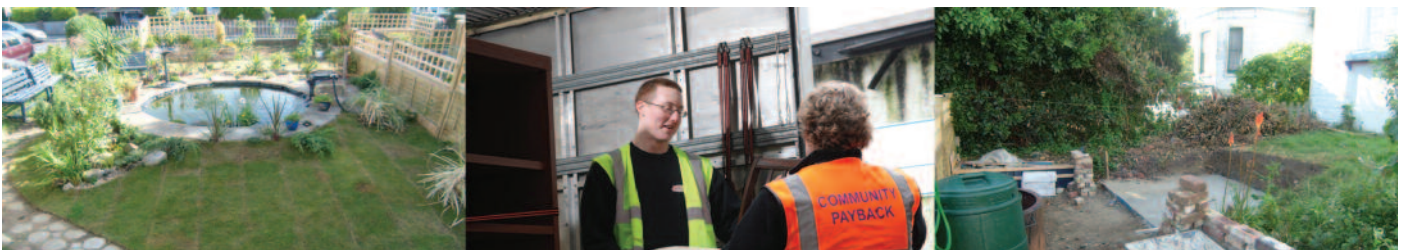
For many young people the skate park in Ryde is a popular place to meet friends. However, in recent years the park has been in need of a facelift. Working in partnership with Isle of Wight Council, offenders have been sanding and then painting the park to give young people a rejuvenated, clean and safe place to skate and socialise with their friends.

Bembridge Cemetery Restoration

For bereaved families a cemetery is a place of solace and reflection, but for the community in Bembridge, their graveyard had become an overgrown, untidy and unwelcoming place for people to remember their loved ones. A team of offenders helped clear vegetation between the headstones and around the perimeter; they also carried out minor masonry repairs to the headstones and repainted iron railings surrounding burial plots. This has helped return the cemetery to a clear and accessible space for those who wish to reflect or celebrate the lives of loved ones.

Victoria and Albert Cottages

Medina Housing Association requested the help of the Community Payback Team to reinstate the communal gardens and allotments at the Victoria and Albert Cottages in Whippingham. This is a community of Almshouses that are of great historical interest. The project is ongoing - so far the garden has been reinstated and work has been started on the allotments. Old structures have been knocked down and offenders are cleaning the old bricks and constructing pathways around the site. Great care has been taken to preserve as much of the original site as possible.



North Hampshire

The North Hampshire area covers a large, mainly rural, part of the county that encompasses the cities of Winchester and Basingstoke and the large towns of Aldershot, Fleet and Andover. Strong working relationships have been forged with many local partners, including Parish and District Councils, and local charities. The size of the area means that offenders on Community Payback in North Hampshire often travel significant distances to their work sites and below are examples of projects offenders have been involved in:

Totland Close Project

A Housing Association in Farnborough asked the Community Payback team to give the town's Totland Close area a facelift. After several years of neglect the area was in need of a new look.

The offenders created a workshop by converting a garage to give space to store materials and tools, then prepared and painted more than 250 feet of the surrounding wood fencing. Finally, they primed and painted all the metal work (such as windows, doors, railings) in the area.

The residents of Totland Close were so delighted with how the offenders' work has improved their local environment that a similar project is now planned for another area of the town.

The Phoenix Centre

The Phoenix is a charity theatre, which offers a range of arts activities for the local community, including for adults with physical and mental disabilities. They enlisted the help of the Community Payback Team to improve the outside area of the centre.

Offenders worked to clear the ground, reshape hedgerows, trees and flower beds and then re-instated pathways and fencing that had become overgrown.

On the strength of this, Community Payback now has a standing arrangement one day a month to ensure that the Centre's grounds are maintained to the excellent standard that has been achieved.



Working in Partnership

Hampshire Probation Trust has worked with over a 550 organisations across the county and Island. We would like to thank all those partners who have helped us ensure that the work done by offenders on Community Payback is challenging, productive and, in a very visible way, shows how offenders can make a real contribution to their communities.

Offenders have worked for a variety of organisations including:

Southampton City Council
Jamie's Computers
Age UK Charity Shops
Cancer Research Charity Shops
Vitalise, Netley Waterside House
Rose Road Charity Shops
St Swithin Wells Primary School
Colden Common Primary School
Lymington and Pennington Town Council
Applemore Scouts
Girlguiding UK's training and activity centre Foxlease
Rona Trust
Bursledon Brickworks
Hilsea Lido
Beneficial Centre (Groundlings)
Havant Borough Council
Victory business centre
Sue Ryder Trust
Portsmouth City Council

Hart District Council
Rushmoor Borough Council
First Wessex
British Heart Foundation
Debra Charity
Liss Parish Council
Headley Parish Council
Bentley Parish Council
Connaught School
Calthorpe School
Newlands School
Lions Community Store
Leonard Cheshire Homes
The Abbeyfield Society
The Community Church
All Saints Church, Calbourne
All Saints Church, Godshill
Christian Respite Centre
Freshwater Parish Council

**A full list of our Beneficiaries can be found on our website:
www.hampshire-probation.gov.uk**



COMMUNITY
PAYBACK

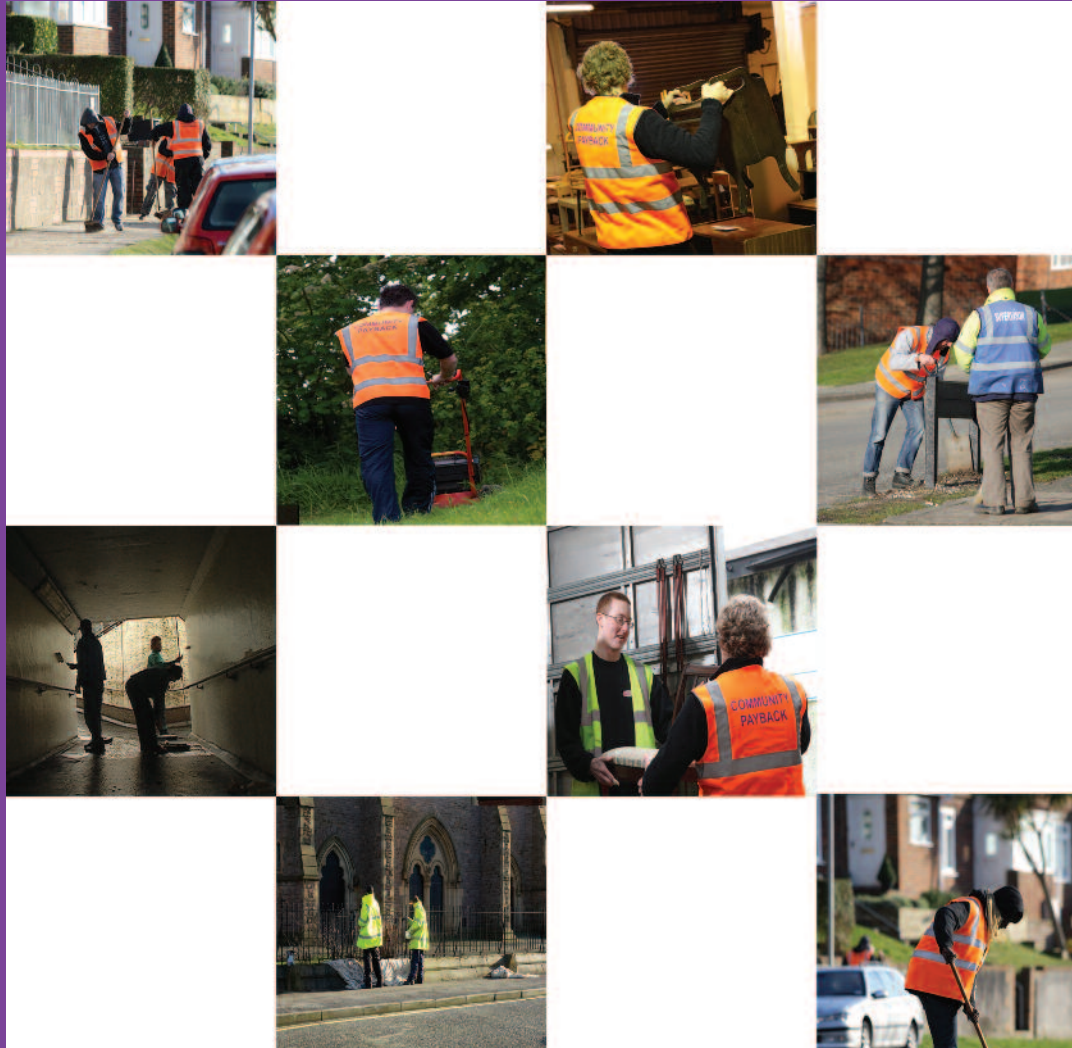
SUPERVISOR



Hampshire
Probation Trust



Working together to reduce offending



**If you require further information,
please feel free to contact us:**

01962 842202

enquiries@hampshire.probation.gsi.gov.uk

www.hampshire-probation.gov.uk

